

193-Article_Text-583-4-10- 20221105-1.pdf

by

Submission date: 11-Apr-2023 04:08PM (UTC+0700)

Submission ID: 2061420709

File name: 193-Article_Text-583-4-10-20221105-1.pdf (1.67M)

Word count: 5207

Character count: 27565

Manuscript received February 10, 2022; Revised February 17, 2021; accepted March 1, 2022; date of publication March 20, 2022

Digital Object Identifier (DOI): <https://doi.org/10.35882/teknokes.v15i1.1>

Copyright © 2022 by the authors. This work is an open-access article and licensed under a Creative Commons Attribution-ShareAlike 4.0 International License ([CC BY-SA 4.0](https://creativecommons.org/licenses/by-sa/4.0/))

How to cite Vijay Anant Athavale, Abhilash Pati, A K M Bellal Hossain, Sari Luthfiyah, and Triwiyanto, "An Android INCU Analyzer Design to Calibrate Infant Incubator Using Bluetooth Communication for Real-Time and Wireless Monitoring", Jurnal Teknokes, vol. 15, no. 1, pp. 1–8, March. 2022.

An Android INCU Analyzer Design to Calibrate Infant Incubator Using Bluetooth Communication for Real-Time and Wireless Monitoring

Vijay Anant Athavale¹, Abhilash Pati², A K M Bellal Hossain³, Sari Luthfiyah^{4,#}, Triwiyanto⁴

¹ Walchand Institute of Technology, Solapur, INDIA (email: vijay.athavale@gmail.com)

² Siksha 'O' Anusandhan Deemed to be University, Bhubaneswar, INDIA (email: er.abhilash.pati@gmail.com)

³ University of Bisha, SAUDI ARABIA (email: bellalcs@gmail.com)

⁴ Department of Medical Electronics Technology, Poltekkes Kemenkes Surabaya, INDONESIA

[#]Corresponding author: Sari Luthfiyah (email: sariluth@poltekkesdepkes-sby.ac.id)

ABSTRACT Worldwide, over 4 million babies die within a month of birth each year. Of these, 3.9 million are in developing countries. A proportion approximately 25% of these deaths are due to complications of premature birth, most commonly inadequate thermoregulation, water loss, and neonatal jaundice. An infant incubator provides stable temperature, relative humidity, and airflow values. A periodical calibration should be applied on infant incubator to monitor the functionality. The study aims to develop a calibration device that measures temperature, humidity, airflow, and noise in the baby incubator based on an Android application with Bluetooth communication to improve the calibration monitoring process. This is to achieve a better performance of the conventional INCU analyzer. The contribution of this research is that the values of the temperature, humidity, airflow, and noise can be displayed on both devices, the INCU analyzer machine, and mobile phone; thus, the user can monitor the measurement activities wirelessly. Furthermore, the statistical calculation for all measurements can be saved on a mobile phone device. The main design consists of temperature sensor LM35, humidity sensor DHT22, airflow sensor MPX5010DP, an analog signal conditioning circuit, an Arduino Mega microcontroller, Bluetooth module HC05, and Android mobile phone. The resulting design was compared to the standard or calibrator INCU analyzer machine (Fluke Biomedical INCU II). This study found that the smallest error is -1.72°C, -0.106 % RH, -1.727% dB, and <0.1 % m/s for temperature, humidity, noise, and airflow parameters, respectively. After the evaluation process, this device can be used as an INCU analyzer to calibrate the infant incubator.

INDEX TERMS Incubator Analyzer, Temperature, Noise, Android, Bluetooth communication

I. INTRODUCTION

Every year, about one million babies die in developing countries due to premature birth. Premature babies are born before their organs are mature enough to allow average survival after delivery. Because premature babies are at risk of oxygen deprivation, hypothermia, and many other adverse conditions, they need special care and attention [1][2]. One of the main problems faced by newborns is inadequate

thermoregulation. The temperature in the womb is 38°C [3]. If heat loss is not prevented and continues, the baby develops hypothermia and is at increased risk of developing health problems and dying [4]. Therefore, an incubator is required to provide the environment necessary for the baby's survival. An incubator analyzer is a calibration tool that measures the temperature, humidity, noise level, and airflow conditions in the baby incubator to ensure that all parameters of the baby

incubator are suitable for the newborn [4]. Several studies have developed an incubator analyzer that also sends data via Bluetooth that ¹⁰ displayed through a personal computer [5]-[7]. However, there is no data storage, so the operator cannot see the results of previous measurements. According to tests and measurements, the enormous error value at a distance of 5 meters on the temperature sensor module is 0.672% at T1, 0.757% at T2, 0.806% at T3, and 0.787% at T4. The airflow sensor module detects an airflow velocity of at least 0.2 m/s when the anemometer is rotating. The error value of the humidity sensor is -1.03% at a measurement distance of 10 cm, -0.95% at a distance of 2 meters, and 1.12% at a distance of 5 meters [8]. The error value of the noise sensor is -0.17% at a distance of 10 cm, 0.04% at a distance of 2 meters, and 0.35% at a distance of 5 meters. Moreover, it was newly developed by other researchers where the ⁴ tool already uses the Android display [9]-[11]. However, there is a drawback that there is no data storage so that the operator cannot see the results of previous measurements. Measuring the effective distance Bluetooth sensor noise has an average error of 0.44% with a measurement distance of 10 m [12]. The biggest error is in the 37°C temperature setting with the module temperature sensor: 0.286% for the T1 sensor, 1.679% for the T2 sensor, 6.374% for the T3 sensor, 2.187% for the T4 sensor, 1.242% for the T5, and 2.700% for the ¹⁵ T6. The airflow sensor can detect airflow of at least 0.2 m/s when the baby incubator is turned on. The effective distance of the receiver and transmitter used is 50 cm. Then the last one was developed by Azkiyak et al. and other studies ¹⁴ his device is already portable using an Android display and is equipped with storage. However, there are still shortcomings, namely errors that still exceed 5% [13]-[17]. The biggest error on the DS18B20 sensor is 4.33325%, while the biggest error on the K-type Thermocouple temperature sensor is 7.3138%. The biggest error on the analog sound sensor V2 noise sensor is 8.8403%.

The results of temperature and noise errors in the last development are still more than 5%. To improve the performance of the incubator analyzer by replacing the DS18B20 sensor with LM35 because LM35 has an analog voltage output so that an appropriate amplification can be used to get better performance than the previous tool, as well as create a noise sensor circuit with better performance than the previous design. Furthermore, continuous Android application monitoring is an added value for the INCU analyzer. Therefore, this research aims to develop an INCU analyzer-based Android application that can monitor all of the infant incubator machine parameters.

II. MATERIALS AND METHODS

The study is conducted as experimental research. The authors proposed an Android INCU analyzer to measure the infant incubator parameters in this study. The materials and method will be explained in the following section.

A. DATA COLLECTION

In this study, the researchers compared the design (INCU analyzer based on Android application) and the standard INCU analyzer (the ⁹ Fluke Biomedical INCU II) as a comparison device. This study uses the LM35 sensor as a temperature sensor, mic condenser as a noise sensor, DHT22 as humidity sensor, MPX5010DP as airflow sensor, Arduino Mega component as a microcontroller, and HC-05 as data transmission to Android mobile phone [18]. An open-source Android application based (MIT app inventor) was used [19][20].

In the measurement stage, the incubator baby machine was set at 37°C. In order to obtain a normal distribution for the temperature and humidity, the user should wait for 30 to 60 minutes before the model was placed inside the incubator baby. After the incubator baby's temperature is stable, then the incubator monitoring module is placed in the middle of the baby incubator box. The temperature sensors T1, T2, T3, T4, T5, and TM (temperature on the mattress) were placed at a predetermined point (FIGURE 1). Further, the humidity, flow, and noise sensor were placed the certain location in the incubator chamber. After the proposed design is placed in the baby incubator box, the next step is to turn on the INCU monitoring system [21][22]. After this step, the measurement parameter values can be read directly on the INCU monitor module on the liquid crystal display (LCD) screen. Monitoring the INCU parameters on the mobile phone screen is applied by running the INCU analyzer program application (APK, an Android application) program that has been installed and configured. The communication is started by activating the Bluetooth communication between the INCU monitoring system and the mobile phone. The user should select the HC-05 in the provided Bluetooth list on the mobile phone screen. After the communication is established then the data communication will continue. Furthermore, the measured parameter will be displayed on the mobile phone screen. Moreover, if the user would like to save the data, then the user should press the START button. The STOP button was used to finish the data collection process.

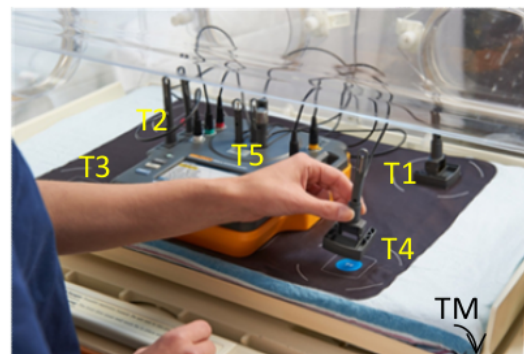


FIGURE 1. Temperature measurement location at T1, T2, T3, T4, T5 and TM used standard incubator analyzer INCU II.

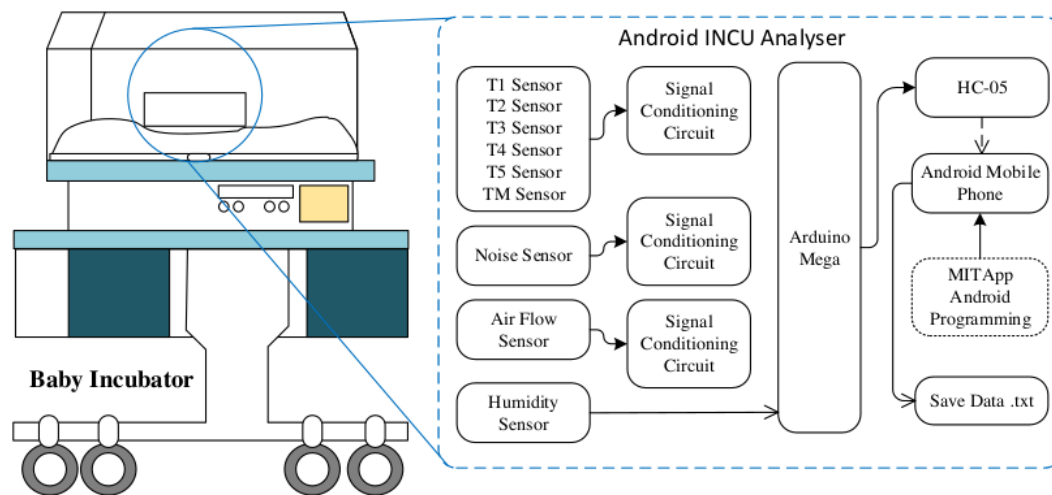


FIGURE 2. The proposed design Android INCU analyzer using MIT App Inventor application to monitor temperature, noise, airflow and humidity sensor wirelessly using Bluetooth connection to Android mobile phone. The system was controlled by using the Arduino MEGA and HC-05 Bluetooth module as the media communication between the system and Android mobile phone application.

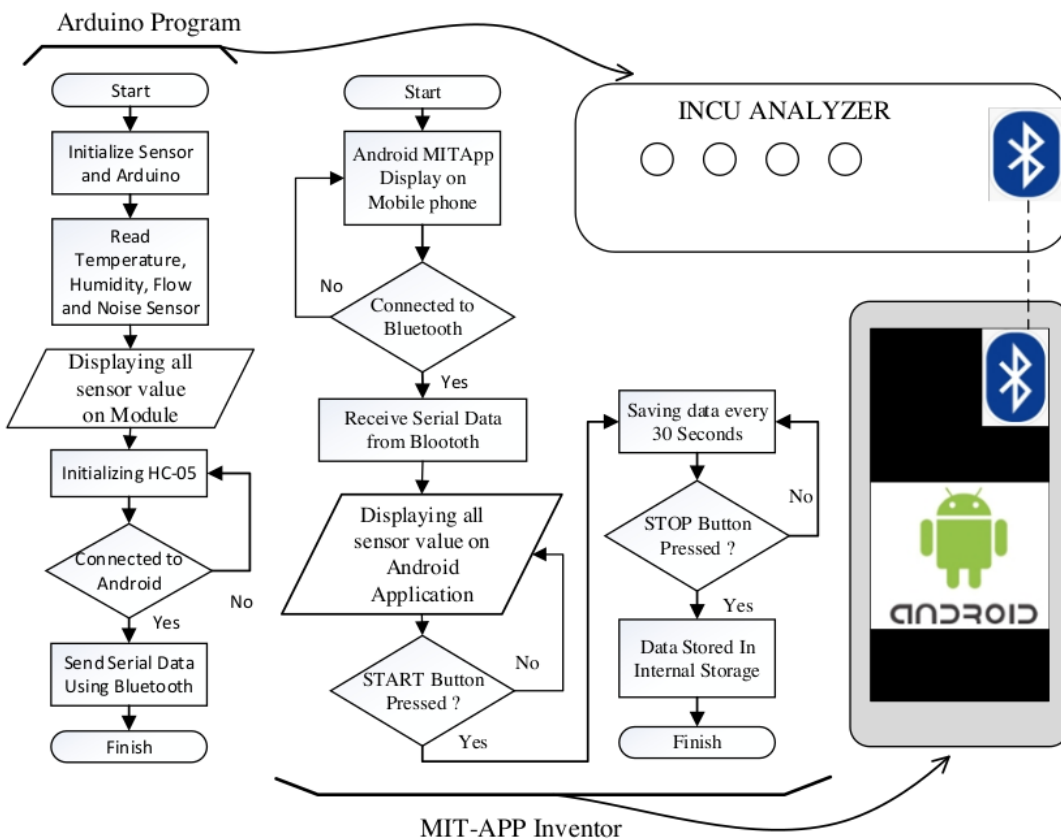


FIGURE 3. The flowchart of the system to detect the physical parameter (temperature, noise, airflow and humidity sensor) and send measured parameters to Android mobile phone. The left part was the flowchart for Arduino programme to detect the parameters and the right part was the flowchart to design the Android application using Android MIT app inventor.

FIGURE 2 shows a block diagram of the entire system. A small box inside the incubator chamber represents the proposed design, namely the Android INCU analyzer. With measurement parameters T1, T2, T3, T4, T5 and TM. Furthermore, other parameters, such as humidity, noise and airflow are also measured. FIGURE 3 shows two flowcharts. The flowchart on the left shows the software design for the Arduino Mega microcontroller, while the flowchart on the right shows the software design for the Android application

B. DATA ANALYSIS

Measurements of each parameter, temperature, humidity, flow, and noise, all were repeated 20 times. The average value of the measurement is obtained by using the mean or average by applying equation (1):

$$\bar{x} = \frac{x_1 + x_2 + \dots + x_n}{n} \quad (1)$$

where \bar{x} indicates the mean (average) value for n-measurement, x_1 indicates the first measurement, x_2 shows the second measurement, and x_n indicates the n measurement. The standard deviation is a value that indicates the level (degree) of variation in a group of data or a standard measure of deviation from its mean. The standard deviation (SD) formula can be shown in equation (2):

$$SD = \sqrt{\frac{\sum(x - \bar{x})^2}{(n-1)}} \quad (2)$$

where x_i indicates the amount of the desired values, \bar{x} indicates the average of the measurement results, n shows the number of measurements. Uncertainty (UA) is doubt that appears in each measurement result. The uncertainty formula is shown in equation (3):

$$U = \frac{s}{\sqrt{n}} \quad (3)$$

where UA indicates the uncertainty value from the total measurement, SD shows the resulted standard deviation, and n shows the amount measurement. the %error shows the error of the system. The lower value Error is the difference between the mean of each data. The error can show the deviation between the standard and the design or model. The error formula is shown in equation (4).

$$\%ERROR = \frac{(x_n - \bar{x})}{\bar{x}} \times 100\% \quad (4)$$

where x_n is the value measured from the calibrator machine. The \bar{x} is the value measured from the design.

III. RESULT

We found that the error values range between -0.1% and 1.5% based on the temperature measurement. The detailed measurement results are shown in the following table and graphics. The measurement was conducted 20 times for each parameter (temperature T1, T2, T3, T4, T5, TM, humidity, airflow, and noise). The INCU II (standard INCU analyzer) was used as a comparison device in this study. TABLE 1 and FIGURE 4 show the average measurement results on the

design and standard INCU analyzer. We found the difference between the calibrator and design result when the noise was measured in these two devices. The temperature parameter measurement error between the calibrator (INCU 2) and the design for the difference setpoint is shown in TABLE 2 and FIGURE 5. In the temperature measurement, the smallest error value is 0.0373% at T1, the setting temperature is 36°C, and the largest error is 2.617% at T4, the setting temperature is 35°C. In the noise parameter, the smallest error value is -1.727% at 37°C settings, and the largest error is 5.254% at 36°C settings.

TABLE 1

The comparison measurement between the design and calibrator unit for three setpoint (35, 36, and 37) in the five certain location T1, T2, T3, T4, T5 and TM. All of the measurement parameters were performed 20 times for each setpoint. A DC fan was introduced to study interference due to noise in the system (for the proposed design and calibrator unit).

| Measuring Point | | Mean | | | |
|-----------------|-------|---------|---------|---------|-----------------|
| | | 35°C | 36 °C | 37 °C | with DC Fan(dB) |
| Design | T1 | 34.3917 | 35.6417 | 36.3833 | - |
| | T2 | 34.3208 | 35.5708 | 36.3333 | - |
| | T3 | 34.275 | 35.4833 | 36.1958 | - |
| | T4 | 34.8625 | 35.9333 | 36.6917 | - |
| | T5 | 35.1417 | 36.7125 | 37.275 | - |
| | TM | 33.0792 | 34.2625 | 34.6042 | - |
| | Noise | 45.86 | 48.32 | 47.5067 | 69.5667 |
| Calibrator | T1 | 34.2933 | 35.655 | 36.0633 | - |
| | T2 | 34.0767 | 35.41 | 36.015 | - |
| | T3 | 34.295 | 35.6133 | 36.1083 | - |
| | T4 | 33.9733 | 35.2067 | 35.7767 | - |
| | T5 | 35.1217 | 36.9867 | 36.9317 | - |
| | TM | 33.15 | 34.5583 | 34.55 | - |
| | Noise | 47.3667 | 51 | 46.7 | 67.7333 |

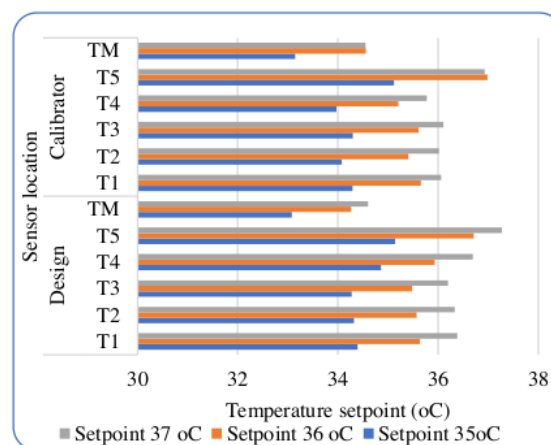


FIGURE 4. The comparison between the design and calibrator unit for three setpoints (35, 36, and 37 degrees Celcius) in the certain locations T1, T2, T3, T4, T5, and Tm.

TABLE 2

Temperature parameter measurement error between the design and calibrator unit for all temperature set point (35°C, 36°C, and 37 °C) on five certain location T1, T2, T3, T4, T5 and TM. The measurement was conducted 20 times for each setpoint including the noise error. Note: in this study, the calibrator used is Fluke Biomedical INCU II and the design is the proposed method.

| Measuring Point | Error | | | |
|-----------------|----------|----------|----------|-------------|
| | 35°C | 36°C | 37°C | With DC Fan |
| T1 | -0.28674 | 0.03739 | -0.88732 | - |
| T2 | -0.71652 | -0.45420 | -0.88389 | - |
| T3 | 0.05831 | 0.36503 | -0.24232 | - |
| T4 | -2.61724 | -2.06400 | -2.55753 | - |
| T5 | -0.05694 | 0.74125 | -0.92964 | - |
| TM | 0.21367 | 0.85604 | -0.15677 | - |
| Noise (dB) | 3.18085 | 5.25490 | -1.72733 | -2.70669 |

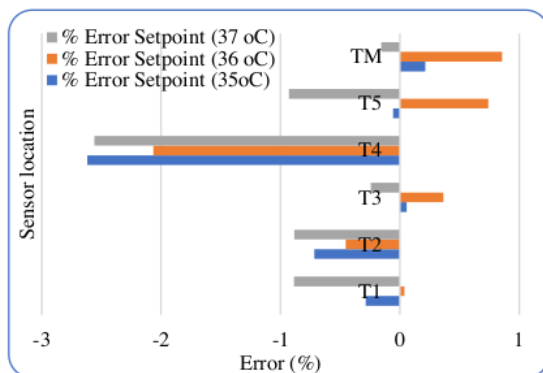


FIGURE 5. Temperature parameter measurement error between the design and calibrator unit for all temperature set point (35°C, 36°C, and 37 °C) on five certain location T1, T2, T3, T4, T5 and TM. The measurement was conducted 20 times for each setpoint. Note: in this study, the calibrator used is Fluke Biomedical INCU II and the design is the proposed method.

TABLE 3

Airflow measurement error between the design and calibrator unit for all temperature set point (35°C, 36°C, and 37 °C). The measurement was conducted 20 times for each setpoint. Note: in this study, the calibrator used is Fluke Biomedical INCU II and the design is the proposed method.

| Setting (°C) | Measurement Tool | Average (m/s) | Error (%) |
|--------------|------------------|---------------|-----------|
| 35 | Design | 0 | <1.0 |
| | Calibrator | <0.1 | |
| 36 | Design | 0 | <1.0 |
| | Calibrator | <0.1 | |
| 37 | Design | 0 | <1.0 |
| | Calibrator | <0.1 | |
| 35 | Design | 0.63167 | -2.710 |
| | Calibrator | 0.615 | |

In TABLE 1, when the temperature setting is 35, 36, 37 degrees, the error value is <100% because the module cannot read airflow below 0.1 m/s.

TABLE 4

Humidity parameter measurement error between the design and calibrator unit for all temperature set point (35°C, 36°C, and 37 °C). The measurement was conducted 20 times for each setpoint. Note: in this study, the calibrator used is Fluke Biomedical INCU II and the design is the proposed method.

| Setting (°C) | Measurement Devices | Average | Error (%) |
|--------------|---------------------|---------|-----------|
| 35 | Design | 62.483 | -0.106 |
| | Calibrator | 62.416 | |
| 36 | Design | 56.550 | 1.538 |
| | Calibrator | 57.433 | |
| 37 | Design | 57.933 | 1.278 |
| | Calibrator | 58.683 | |

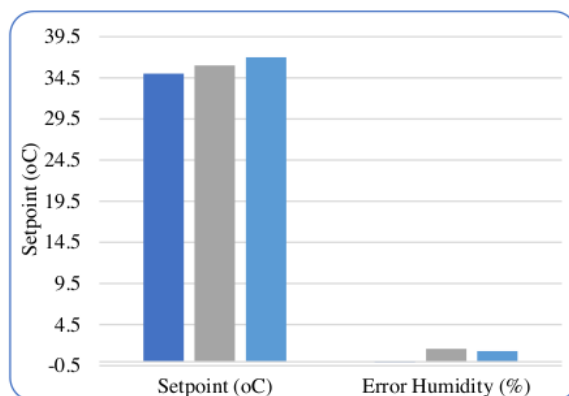


FIGURE 6. Effect of temperature setpoint value (35°C, 36°C, and 37 °C) on infant incubator machine to the humidity parameter measurement error.

Meanwhile, when setting 35 degrees with treatment, the error value is -2.71002%. The reading of the module value is still not stable, so that error is still obtained. In TABLE 4, the humidity error value is below 2%. The reading of the module value is stable enough to obtain the error. Additionally, the effect of the difference setpoint on the temperature is shown in FIGURE 6. Additionally, every temperature setpoint has different error humidity. FIGURE 6 shows the final proposed design as an INCU analyzer with an Android phone connection.



FIGURE 7. The proposed design (INCUS ANALYSER) is based on Android application, (a) top view of the model, and (b) side view of the model.

IV. DISCUSSION

The results showed that the proposed design could be used to measure the parameters of the baby incubator. This module consists of an LM35 to measure the temperature, MPX5010DP sensor to detect the airflow rate in the baby incubator chamber, a mic condenser to sense the noise in the chamber and a DHT22 sensor used to detect humidity in the baby incubator chamber. All parameters are displayed on the liquid crystal display and Android mobile phone display. The values of the parameters are transmitted over the Bluetooth by using the HC-05 module. Arduino and Android mobile phone should be configured first so that all parameters can be sent and received correctly. All of parameters will be processed sequentially in a separated list by giving each variable's a symbol "I". The measured variables in real-time are displayed in the column according to the parameter name. Additionally, the user can press the start button to start saving data and data will be saved every 30 seconds. The data will be stored in the internal storage in a specific folder with the file name "IncuA.txt".

In this study, programming on android applications is made using MIT App Inventor (Version 2.62). It is an online and open-source application to build functional application for Android and IOS. Furthermore, for the acquisition of data for various parameters, the Arduino program used two timers to update the display and saving the data. The first-timer was run for every second to display parameter data, and the second-timer was to save data at regular for every 30 seconds.

The proposed design was then compared with a calibrator unit INCU II to validate the measured parameters of the proposed model. The smallest error resulting from the humidity parameter was -0.106% at 35°C, and the largest error was 1.538% at 36°C. Meanwhile, the airflow parameter gets an error of 2.710% when a fan is applied. On the other hand, the smallest temperature error value of 0.037% at T1 setting temperature of 36°C and the largest error of 2.617% at T4 setting temperature of 35°C. Meanwhile, for the noise parameter, the smallest error value is -1.727% at 37°C setting, and the largest error is 5.254% at 36°C setting.

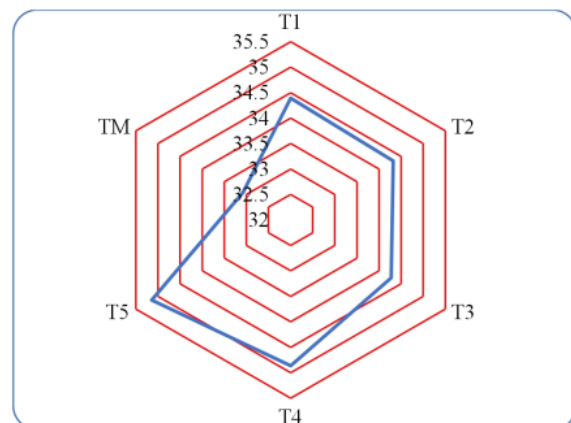


FIGURE 8. The radar graph shows the temperature distribution in the infant incubator room among T1, T2, T3, T4, T5, and TM for temperature setpoint 35 °C.

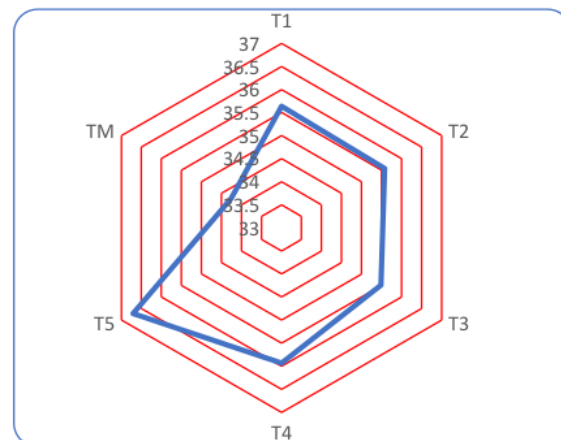


FIGURE 9. Radar graph shows the temperature distribution on the infant incubator room among T1, T2, T3, T4, T5, and TM for temperature setpoint 36 °C.

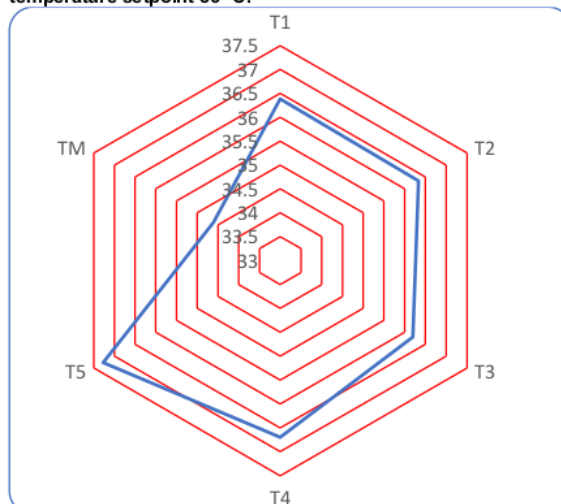


FIGURE 10. Radar graph shows the temperature distribution on the infant incubator room among T1, T2, T3, T4, T5, and TM for temperature on setpoint 37 °C.

FIGURES 8, 9, and 10 show an in-depth analysis of the temperature distribution on the infant incubator machine for temperatures of 35°C, 36°C, and 37°C, respectively. The radar graph shows that the incubator temperature that is close to the setpoint is at point T5, which is located at the midpoint of the incubator chamber. The temperature measurement point at T4 occupies a measurement point that is close to the setpoint temperature after the T5. In addition, the measurement points T1, T2, T3 produce temperature measurements that have a larger difference to the setpoint temperature. Furthermore, the TM temperature measurement point is far from the setpoint; this is understandable because the position of the measurement point is under the mattress.

The limitations of this study are that storage can only be applied through an application on Android. When users have not installed the application, they can not save it in storage memory. Processing measurement data is also manual by importing storage data into excel. There is no graph display to know when the state is stable. Based on TABLE 1, the airflow sensor still cannot detect airflow correctly. In contrast, the airflow sensor shows inconsistent measurement results in the given treatment so that a significant error is still obtained.

The development of an INCU analyzer based on an Android application can be implemented for general incubator machine measurements as well as for routine calibration processes [23]-[25]. Android-based applications can make it easier for users or technicians to monitor the measurement process. Further development can be implemented by implementing a modem control system on the infant incubator machine, which is accompanied by monitoring through the Android application [26]-[28].

V. CONCLUSION

This study aims to optimize an Android phone for monitoring INCU analyzer measurements. It may be concluded that the system can be utilized to detect temperature, humidity, flow, and noise in the infant incubator chamber after the validation and calibration stages. When the temperature is below 25°C, a differential amplifier circuit can eliminate the LM35 sensor's initial voltage. The smallest error value for the temperature parameter is 0.0373 percent at T1 for a temperature setting of 36°C, while the biggest error is 2.617 percent at T4 for a temperature setting of 35°C. The smallest error value in the noise parameter is -1.727 percent at 37°C settings, and the biggest error value is 5.254 percent at 36°C settings. For future development, multiple wireless connections should be proposed; thus, any device can easily connect to the INCU analyzer system.

REFERENCE

- [1] Zemani, M. A., E. Feki, and A. Mami. "Building simulation model of infant-incubator system with decoupling predictive controller." *IRBM* 35, no. 4 (2014): 189-201.
- [2] Hollywood, Mark, and Eleanor Hollywood. "The lived experiences of fathers of a premature baby on a neonatal intensive care unit." *Journal of Neonatal Nursing* 17, no. 1 (2011): 32-40.
- [3] Cockcroft, Sarah. "How can family centred care be improved to meet the needs of parents with a premature baby in neonatal intensive care?." *Journal of Neonatal Nursing* 18, no. 3 (2012): 105-110.
- [4] Yeler, Osman, and Mehmet Fevzi Koseoglu. "Performance prediction modeling of a premature baby incubator having modular thermoelectric heat pump system." *Applied Thermal Engineering* 182 (2021): 116036.
- [5] Laily Nurrohman, Dwi Herry Andayani, and Andjar Pudji. "Development of Incubator Analyzer Using Personal Computer Equipped With Measurement Certificate", *j.electron.electromedical.eng.med.inform*, vol. 2, no. 2, pp. 74-79, Jul. 2020.
- [6] G. T. Sen and M. Yükksekaya, "Desing and Test of an Incubator Analyzer," 2018 2nd International Symposium on Multidisciplinary Studies and Innovative Technologies (ISMSIT), 2018, pp. 1-5, doi: 10.1109/ISMSIT.2018.8567049.
- [7] Syarifatul Ainayah, D. H. Andayani, A. Pundji, T. Triwiyanto, and M. Shaib, "Development of Incubator Analyzer Based on Computer with Temperature And Humidity Parameters", *j.electron.electromedical.eng.med.inform*, vol. 2, no. 2, pp. 48-57, Jul. 2020.
- [8] MIHAI, BOGDAN. "How to use the DHT22 sensor for measuring temperature and humidity with the arduino board". *Acta Universitatis Cibiniensis-Technical Series*, 2016, 68: 22-25.
- [9] Hollywood, Mark, and Eleanor Hollywood. "The lived experiences of fathers of a premature baby on a neonatal intensive care unit." *Journal of Neonatal Nursing* 17, no. 1 (2011): 32-40.
- [10] Inam, Shehla, Muhammad Farrukh Qureshi, Faisal Amin, Muhammad Akmal, and Muhammad Ziaur Rehman. "Android based Internet Accessible Infant Incubator." In *2019 8th International Conference on Information and Communication Technologies (ICICT)*, pp. 25-29. IEEE, 2019..
- [11] Omer, Mahmoud, and Eltahir Mohammed. "The Accuracy of Temperature Monitoring of the Incubator for Newborns." *Journal of Engineering and Computer Science (JECS)* 16, no. 3 (2019): 58-63.
- [12] White, Robert D. "The newborn intensive care unit environment of care: how we got here, where we're headed, and why." In *Seminars in perinatology*, vol. 35, no. 1, pp. 2-7. WB Saunders, 2011.
- [13] Liu, Jinxia, Ning Wang, Robert C. Buck, Barry W. Wolstenholme, Patrick W. Folsom, Lisa M. Sulecki, and Cheryl A. Bellin. "Aerobic biodegradation of [14C] 6: 2 fluorotelomer alcohol in a flow-through soil incubation system." *Chemosphere* 80, no. 7 (2010): 716-723.
- [14] Azkiyakh, Vina Nadhirotul, Syaifudin Syaifudin, and Dyah Titisari. "Incubator Analyzer Using Bluetooth Android Display (Humidity & Air Flow)." *Indonesian Journal of Electronics, Electromedical Engineering, and Medical Informatics* 1, no. 2 (2019): 71-77.
- [15] Nurrohman, Laily, Dwi Herry Andayani, and Andjar Pudji. "Development of Incubator Analyzer Using Personal Computer Equipped With Measurement Certificate." *Journal of Electronics, Electromedical Engineering, and Medical Informatics* 2, no. 2 (2020): 74-79.
- [16] Islam, Md Mohaiminul, and Navila Rahman Nadi. "An Android Application Based Temperature and Humidity Monitoring and Controlling System for Child Incubators." *International Journal of Scientific & Engineering Research* 9, no. 1 (2018): 668-671.
- [17] Nugraha, Priyambada Cahya, Muhammad Ridha Mak'ruf, Sari Luthiyah, and Wahyu Caesarendra. "Long Distance Dual SpO2 Monitoring System for Premature Babies Using Bluetooth Communication." *Journal of Electronics, Electromedical Engineering, and Medical Informatics* 3, no. 2 (2021): 106-110.
- [18] Mittal, Hitu, Lini Mathew, and Ashish Gupta. "Design and development of an infant incubator for controlling multiple parameters." *International Journal of emerging trends in electrical and electronics* 11, no. 5 (2015): 65-72.
- [19] Hall, Virginia, Eric Geise, and Nasser H. Kashou. "The IncuLight: Solar-powered infant incubator." In *IEEE Global Humanitarian Technology Conference (GHTC 2014)*, pp. 223-226. IEEE, 2014.
- [20] Tarigan, U., R. Ginting, and I. Siregar. "Determining the need for improvement of infant incubator design with quality function deployment." In *IOP Conference Series: Materials Science and Engineering*, vol. 309, no. 1, p. 012103. IOP Publishing, 2018.
- [21] Sharma, Ishika, and Monika Singh. "Infant Warmer Design with PID Control for Stability and Equal Temperature Distribution Equipped with Digital Scales for Prevention of Hypothermia in Newborns." *International Journal of Advanced Health Science and Technology* 1, no. 1 (2021): 7-13.
- [22] Yeler, Osman, and Mehmet Fevzi Koseoglu. "Optimization and experimental validation of a modular thermoelectric heat pump system for a premature baby incubator." *Journal of Electronic Materials* 49, no. 6 (2020): 4053-4066..
- [23] Koli, Megha, Purvi Ladage, Bhavpriya Prasad, Ronak Boria, and Nazahat J. Balur. "Intelligent baby incubator." In *2018 Second*

International Conference on Electronics, Communication and Aerospace Technology (ICECA), pp. 1036-1042. IEEE, 2018.

- [24] Yeler, Osman, and Mehmet Fevzi Koseoglu. "Performance prediction modeling of a premature baby incubator having modular thermoelectric heat pump system." *Applied Thermal Engineering* 182 (2021): 116036.
- [25] Özdemirci, Emre, Meral Özarslan Yatak, Fecir Duran, and Mehmet Rahmi Canal. "Reliability assessments of infant incubator and the analyzer." *Gazi University Journal of Science* 27, no. 4 (2014): 1169-1175.
- [26] Koestoer, Raldi Artono, Ibnu Roihan, and Alfredo Dwi Andrianto. "Product design, prototyping, and testing of twin incubator based on the concept of grashof incubator." In *AIP Conference Proceedings*, vol. 2062, no. 1, p. 020013. AIP Publishing LLC, 2019..
- [27] Marwanto, Arief, Kuat Sunriyadi, and Survani Alifah. "Fuzzy Logic Implementation For Incubator Prototype With Temperature And Humidity Control." In *2019 6th International Conference on Electrical Engineering, Computer Science and Informatics (EECSI)*, pp. 71-74. IEEE, 2019.
- [28] Alimuddin, Alimuddin, Ria Arafiah, Irma Saraswati, Rocky Alfan, Partogi Hasudungan, and Taufik Taufik. "Development and Performance Study of Temperature and Humidity Regulator in Baby Incubator Using Fuzzy-PID Hybrid Controller." *Energies* 14, no. 20 (2021): 6505..

ORIGINALITY REPORT

9%

SIMILARITY INDEX

5%

INTERNET SOURCES

7%

PUBLICATIONS

3%

STUDENT PAPERS

PRIMARY SOURCES

1

www.semanticscholar.org

Internet Source

1%

2

eprints.unipdu.ac.id

Internet Source

1%

3

Submitted to Politeknik Kesehatan Kemenkes
Surabaya

Student Paper

1%

4

I Kade Nova Paramartha, Torib Hamzah
Hamzah, Bedjo Utomo, Sari Luthfiyah, Emre
ÖZDEMİR. "Lost Data and Transmition
Speed Analysis on Incubator Analyzer Based
IoT Technology", International Journal of
Advanced Health Science and Technology,
2022

Publication

1%

5

jeeemi.org

Internet Source

1%

6

Lamidi, Torib Hamzah, Triwiyanto Triwiyanto,
Nuristadarro, Deny Elfredo. "Baby Incubator
Monitoring Center Using Wi-Fi Network for

<1%

7

Laily Nurrohmah, Dwi Herry Andayani, Andjar Pudji. "Development of Incubator Analyzer Using Personal Computer Equiped With Measurement Certificate", Journal of Electronics, Electromedical Engineering, and Medical Informatics, 2020

Publication

<1 %

8

ijahst.org
Internet Source

<1 %

9

Ishika Sharma, Monika Singh. "Infant Warmer Design with PID Control for Stability and Equal Temperature Distribution Equipped with Digital Scales for Prevention of Hypothermia in Newborns", International Journal of Advanced Health Science and Technology, 2021

Publication

<1 %

10

Vina Nadhirotul Azkiyak, Syaifudin Syaifudin, Dyah Titisari. "Incubator Analyzer Using Bluetooth Android Display (Humidity & Air Flow)", Indonesian Journal of electronics, electromedical engineering, and medical informatics, 2020

Publication

<1 %

11

Zaid H. Al-Sawaff, Yahya Zakariya Yahya, Fatma Kandemirli. "Neonatal Incubator Embedded Temperature Observation and Monitoring Using GSM", Journal of Engineering Research and Reports, 2019

Publication

<1 %

12

repository.up.ac.za

Internet Source

<1 %

13

Abdul Majid, Endang Dian Setioningsih, Abd Kholiq, Singgih Yudha Setiawan, Anilkumar Suthar. "Comparative Analysis of PID and Fuzzy Temperature Control System on Infant Warmer", Journal of Electronics, Electromedical Engineering, and Medical Informatics, 2022

Publication

<1 %

14

Yanti Kusumawardani, Endang Dian Setioningsih, Dyah Titisari. "Water Bath Calibration Device with Data Storage Using Six Thermocouple Sensor", Journal of Electronics, Electromedical Engineering, and Medical Informatics, 2020

Publication

<1 %

15

Abd Kholiq, Lamidi. "Analysis of Temperature Sensors with Proportional and Derivative Controls Applied to Infant Incubators", Journal of Biomimetics, Biomaterials and Biomedical Engineering, 2022

<1 %

16

Priyambada Cahya Nugraha, Muhammad Ridha Mak'ruf, Lusiana, Sari Luthfiyah. "Long Distance Dual SpO2 Monitoring in Premature Babies Via Bluetooth Communication", Journal of Electronics, Electromedical Engineering, and Medical Informatics, 2021

Publication

<1 %

17

air.ashesi.edu.gh

Internet Source

<1 %

18

dokumen.pub

Internet Source

<1 %

19

journal.portalgaruda.org

Internet Source

<1 %

20

www.sciencegate.app

Internet Source

<1 %

Exclude quotes On

Exclude matches Off

Exclude bibliography On